

GATEWAY VISITOR CENTER

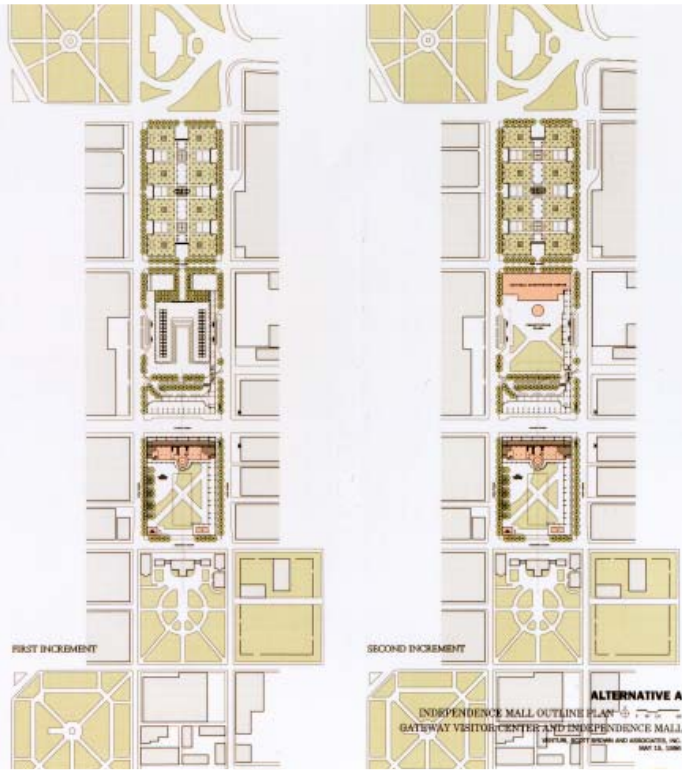
Architects: VSBA

Location: Philadelphia, PA

Client: National Park Service

Size: 1 acre

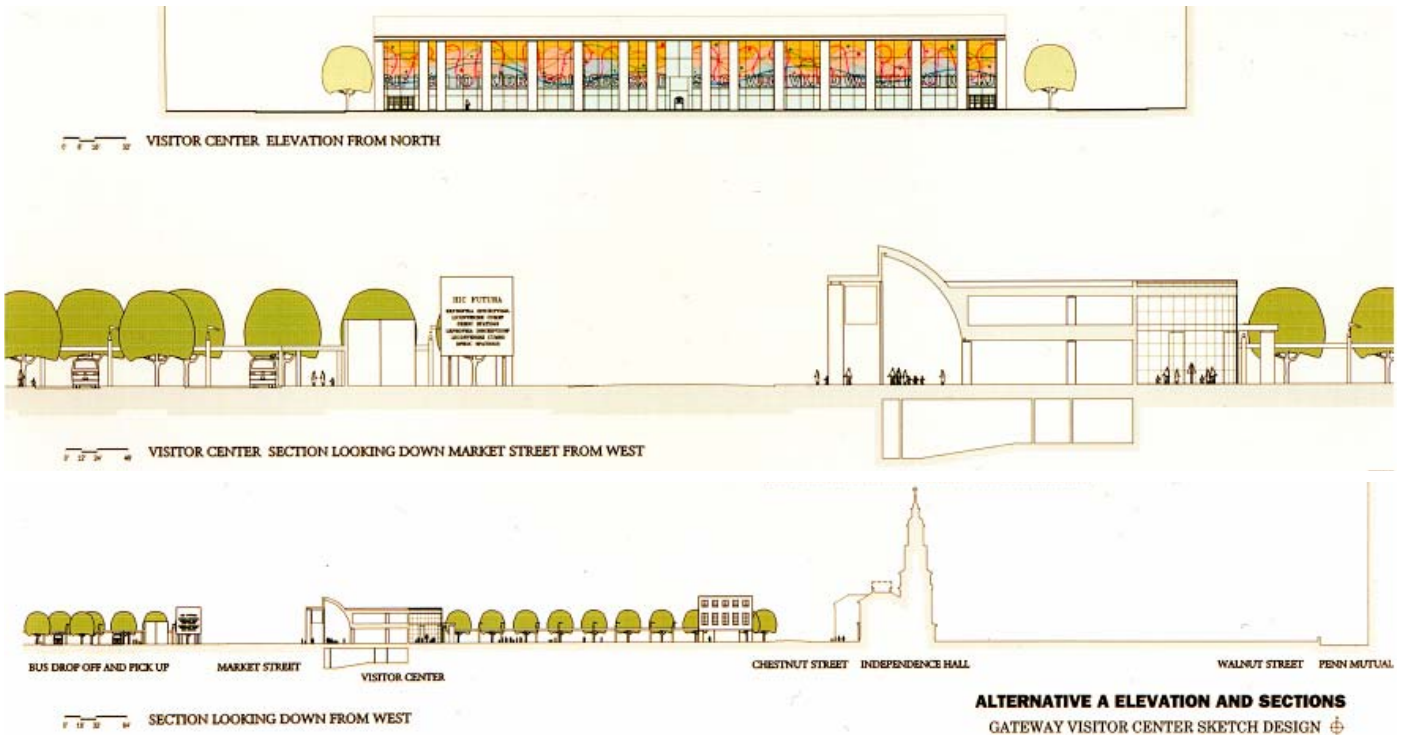
Completion: 1996 (study)



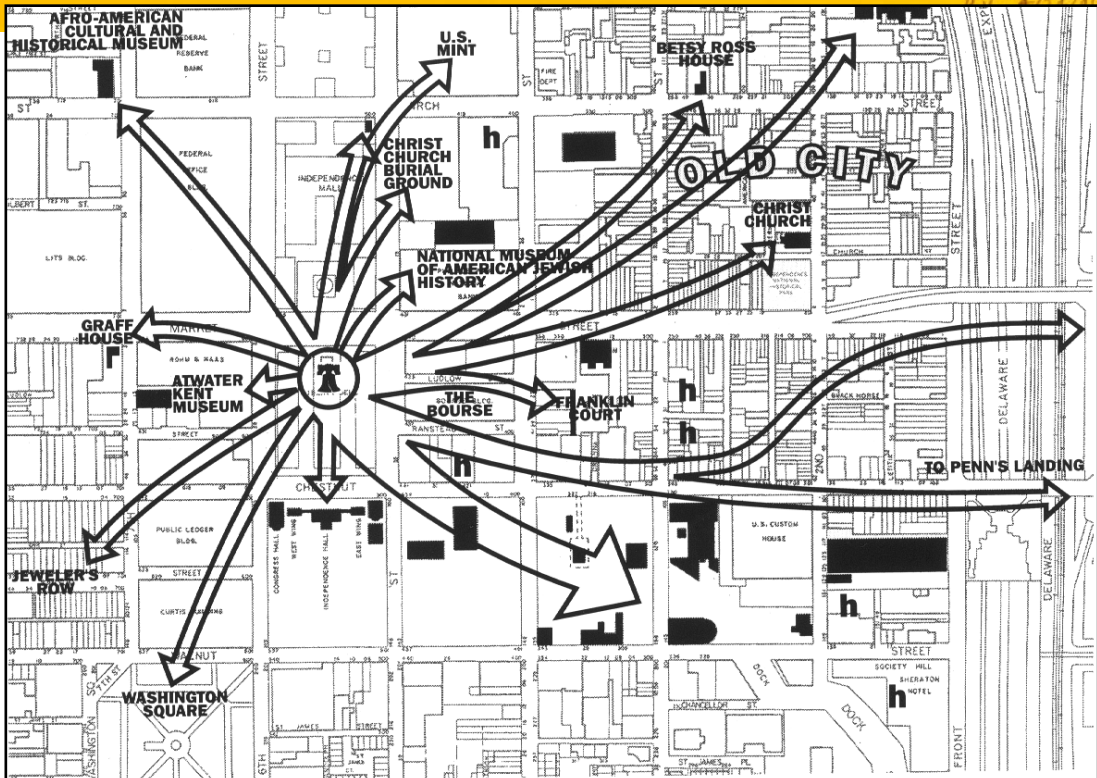
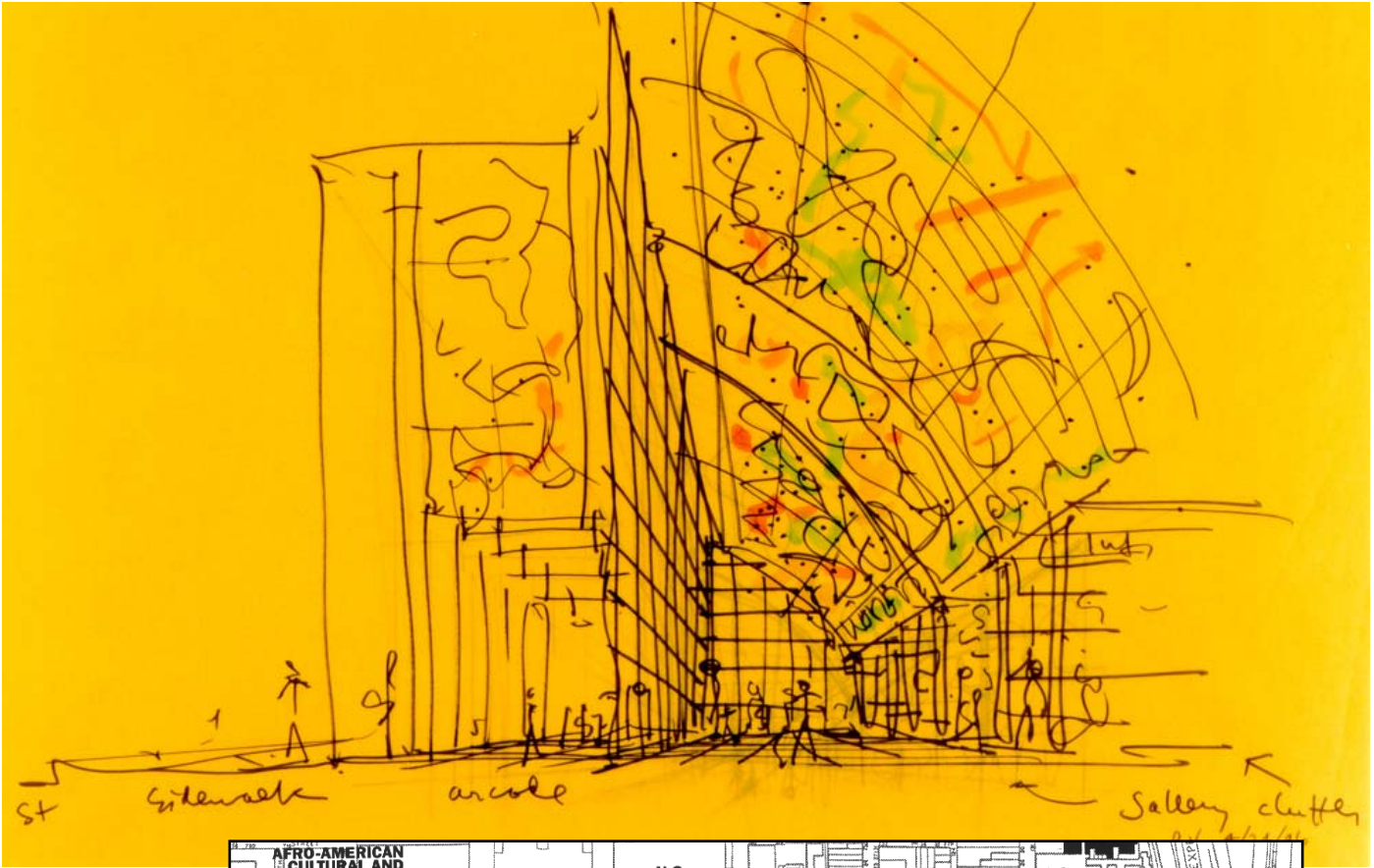
The Pew Charitable Trusts, looking to contribute to Philadelphia's growth, commissioned VSBA to prepare a master plan for Independence Mall and a preliminary design for a new regional visitor center to be located on the Mall.

The overall goal for the project was to shape a Mall with structures and activities so exceptional and delightful that they draw people from across the nation and the world, as well as locally. A strong new Mall identity should set the historic treasures it honors in relation to the entirety of Independence National Historical Park, the Old Philadelphia District, and the City. It should also increase tourism and promote Philadelphia as a 'destination' city.

To these ends, VSBA's plan revitalizes the Mall with new activities anchored by the Visitor Center -- including the National Constitution Center, Independence Park Institute, and First Amendment area, as well as accommodations for tour buses.



ALTERNATIVE A ELEVATION AND SECTIONS
GATEWAY VISITOR CENTER SKETCH DESIGN



Desirable local linkages