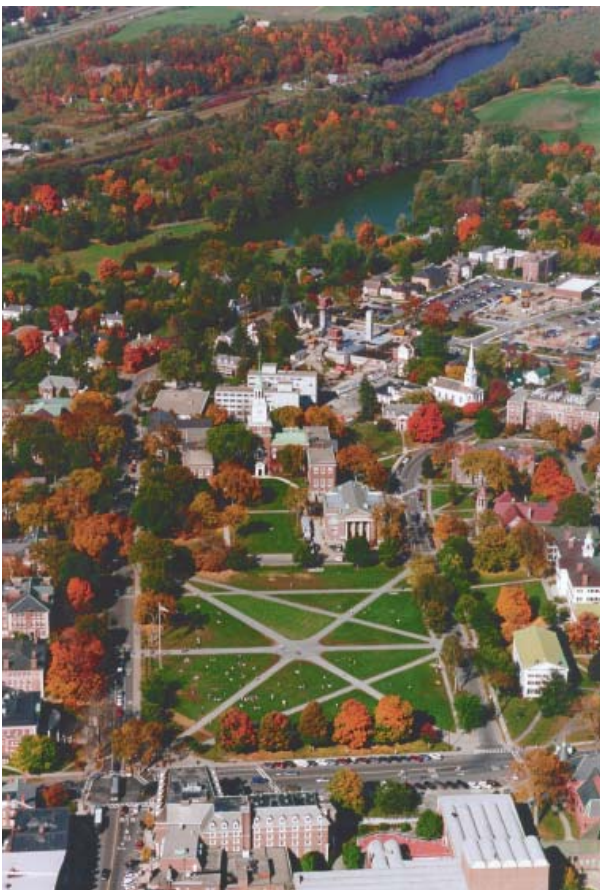




Historic images of Dartmouth's buildings on the green



Aerial photo and painting of Hanover

CONCEPT PLAN, DARTMOUTH COLLEGE

Architects: Venturi, Scott Brown and Associates, Inc.

Location: Hanover, NH

Client: Dartmouth College

Size: 710 acres

Completion: 1988

The acquisition of the large Mary Hitchcock Memorial Hospital complex and associated property of the Dartmouth-Hitchcock Medical Center to the north of Dartmouth's campus prompted the College to evaluate long-term goals for its academic future and physical expansion.

After analyzing Dartmouth's educational goals and growth potential, and conducting a "Learning from Dartmouth" survey, VSBA proposed a new academic quadrangle at the center of the block directly north of the Baker Library. This would link the present campus to the Hospital site to the north. We considered the costs and benefits of various alternatives for the hospital site, including reuse of hospital buildings. An important aspect of this study was the connection established between academic and physical planning. The centerpiece of the northward expansion and cornerstone of the concept plan is VSBA's major addition to Baker Library. Under the plan's guidelines, a new psychology building has been completed and renovations and additions for the computer science department are being designed by other architects. In addition, a new mathematics building on the quadrangle is currently being designed.



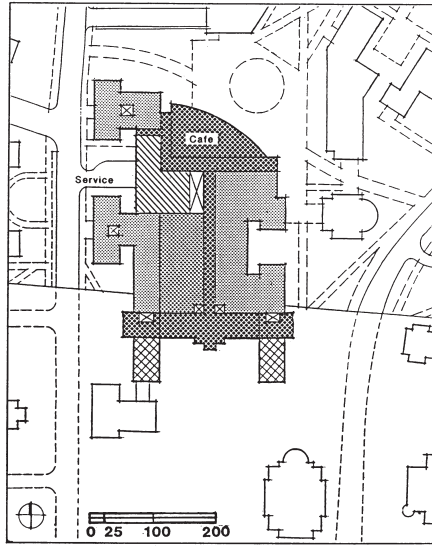


Fig. 35 Lower Level of Baker Library

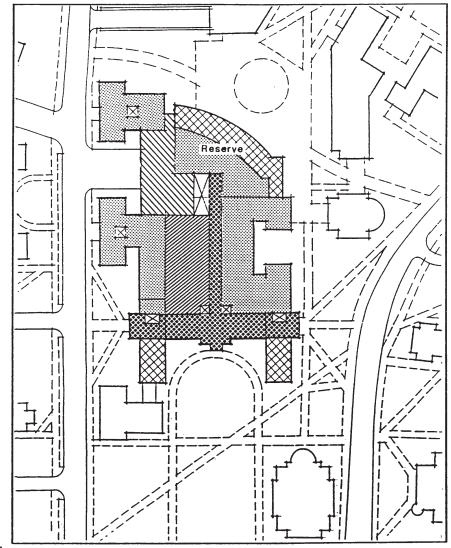
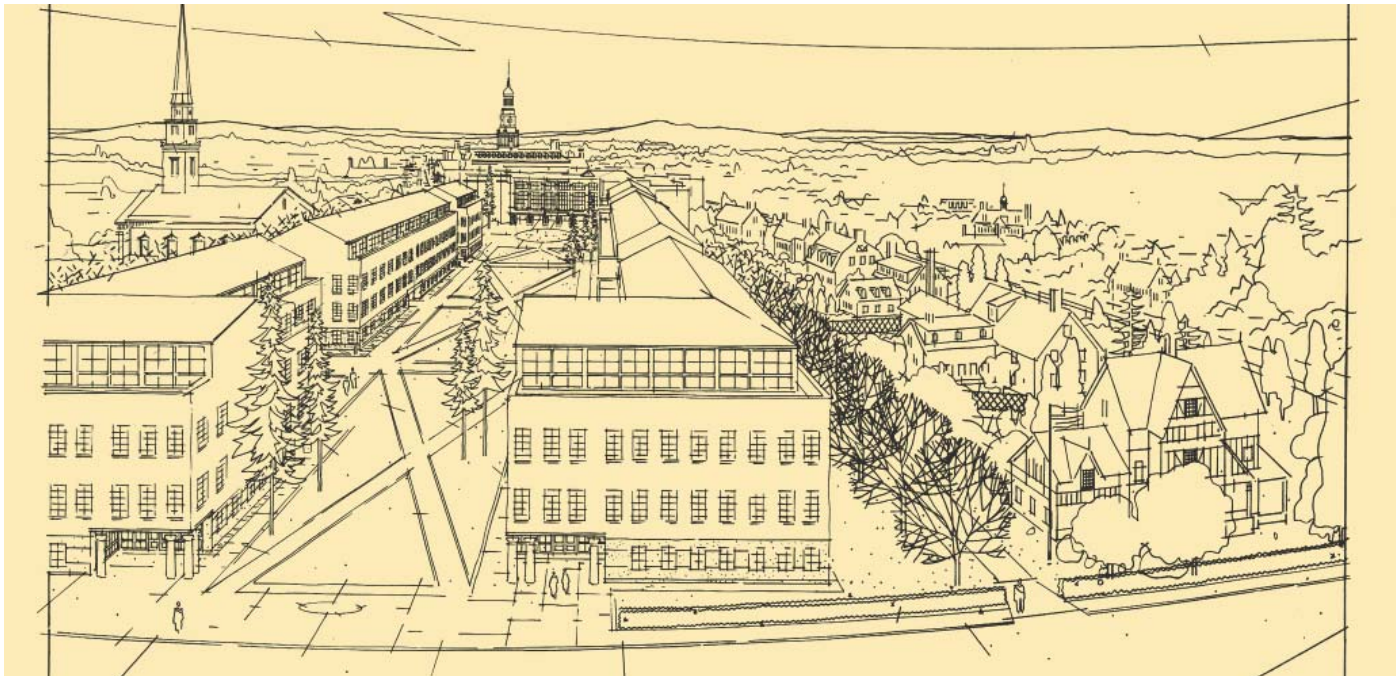


Fig. 36 Main Floor of Baker Library



Fig. 21 Third Succession: Longitudinal Section, Two Level Parking



Plan & perspective of proposed academic Quad